

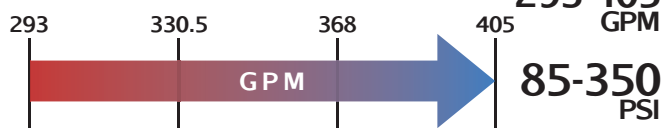


MILLENNIUM SERIES - G090G1L

Progressive Cavity Pump



Millennium G090G1L



Features

- Low Shear
- Solids Handling up to 50%
- Hardened Joints
- Packing or Mechanical Seal
- 3-Stage Options
- Steel or Stainless Steel

Materials

Rotor: Chrome-Plated Tool Steel or Stainless Steel

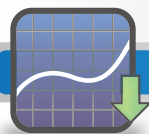
Stator: Buna Nitrile, Natural Rubber, Viton™, EPDM

Motor: 5 - 40 hp

Inlet: 8"

Outlet: 8" - ANSI Flange

Bases: Steel and Stainless Steel



Curves

[Click Links Below](#)

1-Stage
1G090G1L

2-Stage
2G090G1L



Drawings

[Click Links Below](#)

1-Stage
1G090G1L

2-Stage
2G090G1L

Pump Description

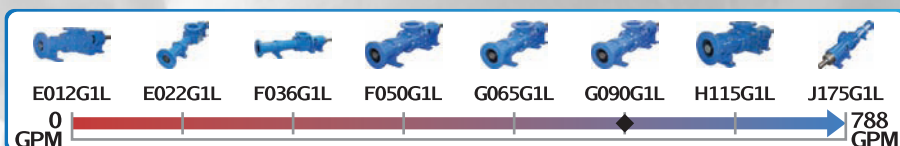
The Liberty Millennium Series G090G1L Heavy Duty Progressive Cavity Pump is ideal for high viscosity liquids and heavy waste solids and other abrasive pumping applications such polymer feed in water treatment facilities. The G090G1L's flow rate of 90 gallons/100 revolutions @ 293 to 405 GPM coupled to its high temperature resistance of up to 350° degrees Fahrenheit makes it an ideal solution for your industrial heavy-duty pumping needs.

The G090G1L is a standard ANSI flanged pump design manufactured with high strength cast iron or 316 Stainless Steel pump casings and designed in 1, 2 and up to 4 stages for 85, 170, and 350 psi discharge pressures making it an ideal low-cost, maintenance free drop-in replacement pump. Standard suction and discharge flange size for the G090G1L is 8".

The Millennium Series low shear and gentle pumping action enables it to pump delicate fluids and not emulsify the liquid making it an ideal polymer pump or oil/water separation pump. Solids handling capability of up to up to 50% by weight allows even the toughest application to be pumped. The Millennium's modular design comes with a positively sealed, hardened gear joint assembly, hardened tool steel rotors or stainless steel rotors both with hard chrome plating for long-life pumping and a wide selection of stators in Buna Nitrile, Viton, EPDM and Natural Rubber.

All other wetted parts are either carbon steel or 316 stainless steel. The standard seal design is a set of packing with a Lantern Ring and flush connectors. Mechanical seal options are readily available.

Contact a Liberty Process Equipment Representative today for more information about the Millennium G090G1L Series of Progressive Cavity Pumps for Waste Solids.



P: 847.640.7867 F: 847.640.7855
2525 Clearbrook Drive Arlington Heights, IL 60005

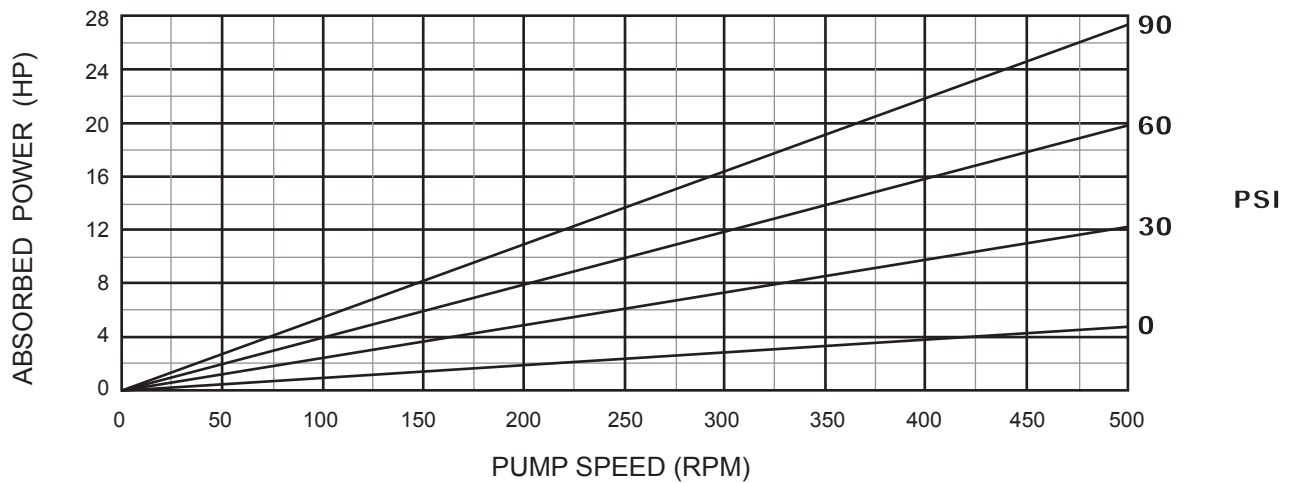
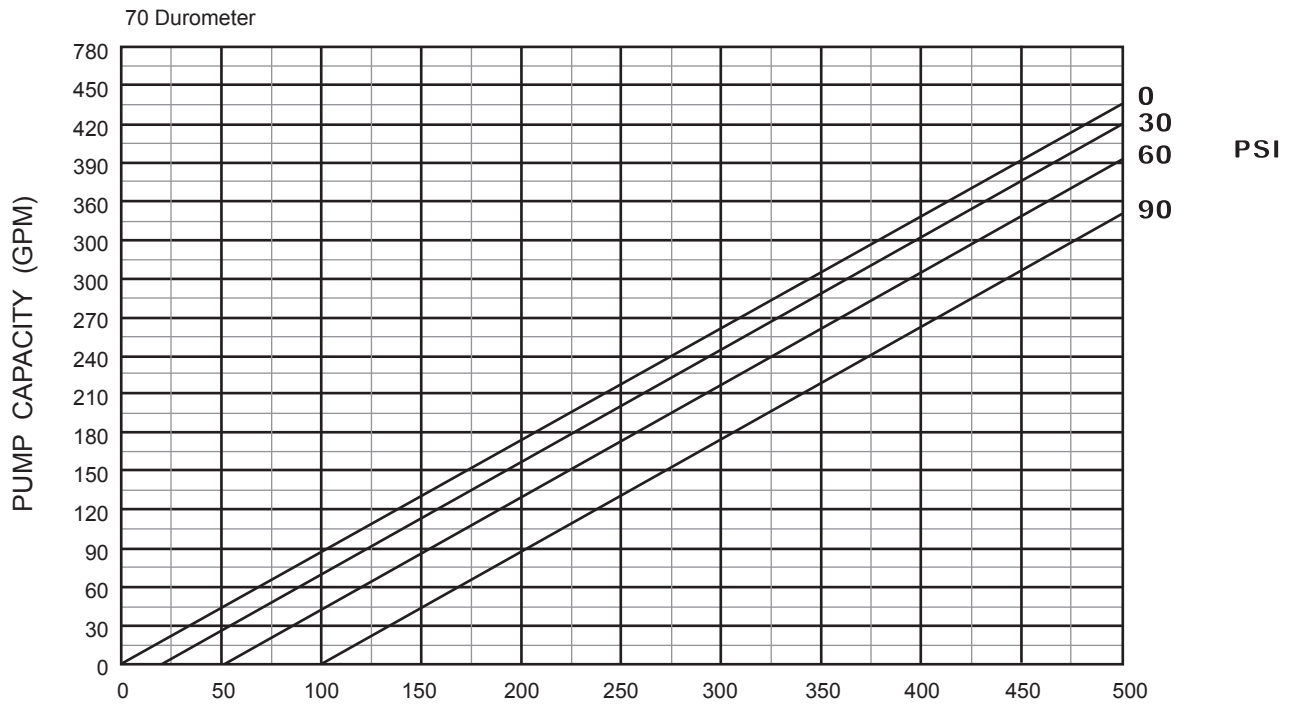
www.libertyprocess.com



MILLENNIUM SERIES - 1G090GIL

Progressive Cavity Pump

Performance Curves



1 Stage Pump

70 Durometer (Performance based on water)

[BACK TO TOP](#)

P: 847.640.7867 F: 847.640.7855
2525 Clearbrook Drive Arlington Heights, IL 60005

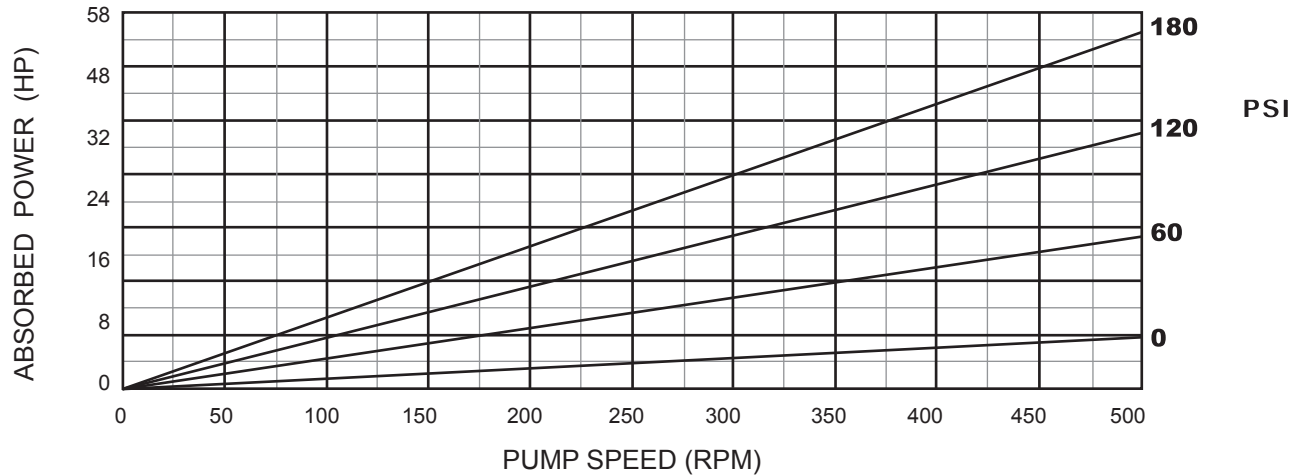
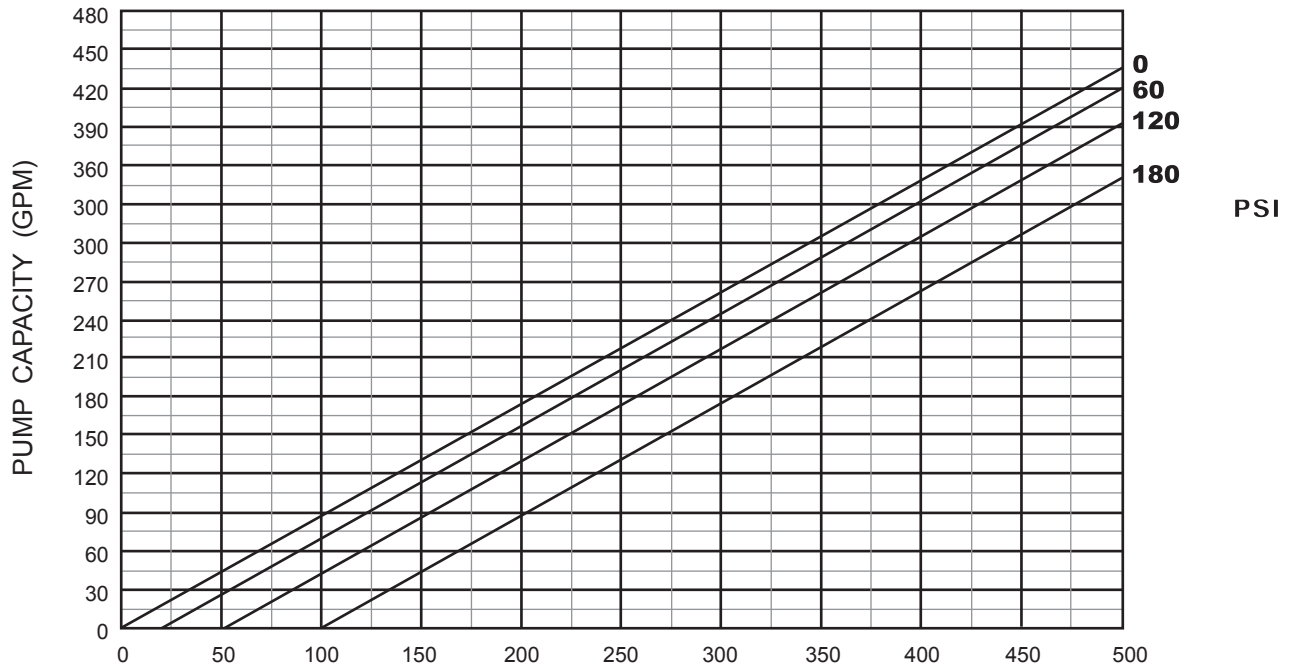
www.libertyprocess.com



MILLENNIUM SERIES - 2G090GIL

Progressive Cavity Pump

Performance Curves



2 Stage Pump

70 Durometer (Performance based on water)

[BACK TO TOP](#)

P: 847.640.7867 F: 847.640.7855
2525 Clearbrook Drive Arlington Heights, IL 60005

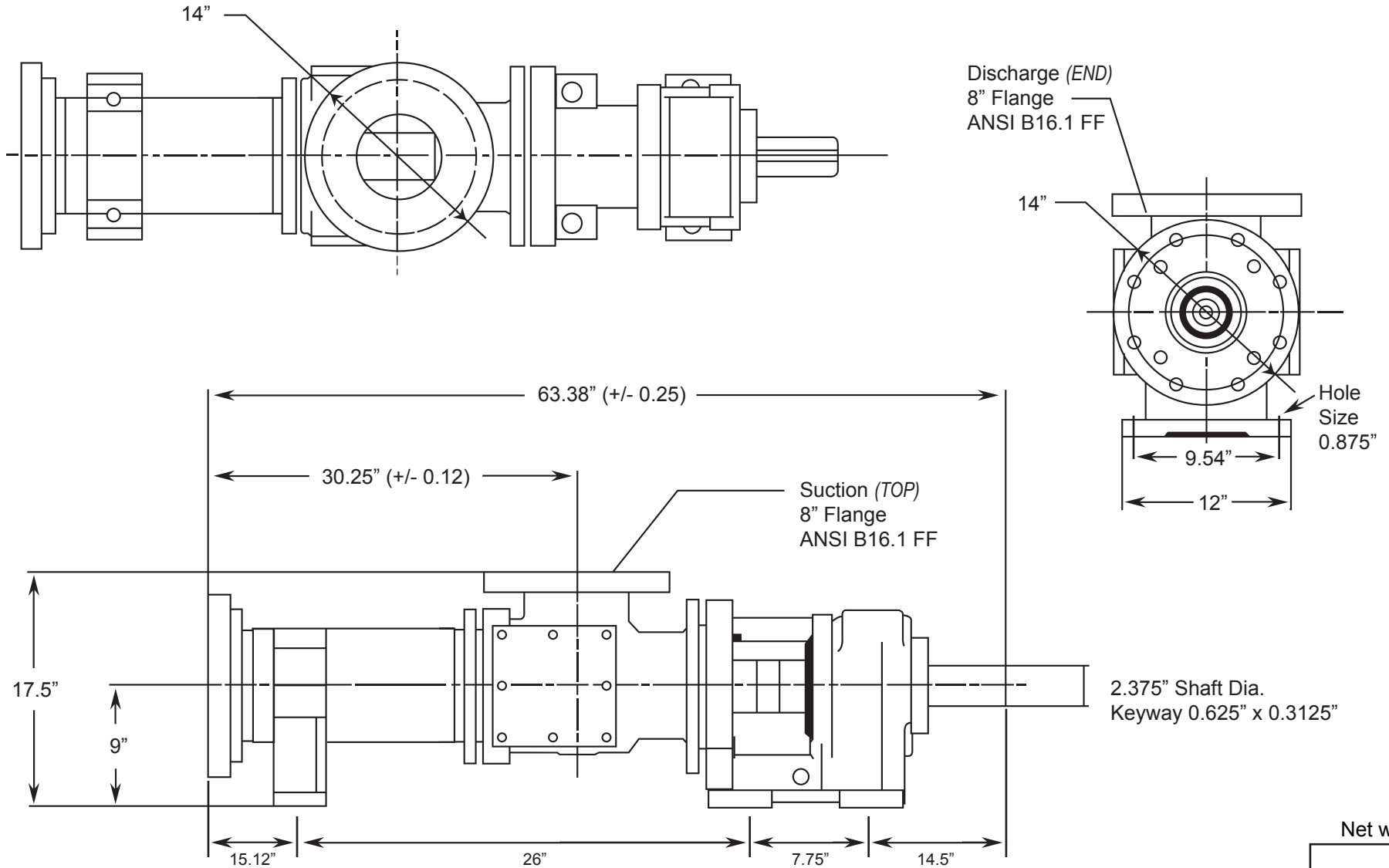
www.libertyprocess.com



MILLENNIUM SERIES - 1G090GIL

Progressive Cavity Pump

Dimensional Drawings



BACK TO TOP

(Pump Rotation is Counter Clockwise) ALL DIMN: Inches

Net weight

≈ lbs.

1125

1 Stage Pump

P: 847.640.7867 F: 847.640.7855
2525 Clearbrook Drive Arlington Heights, IL 60005

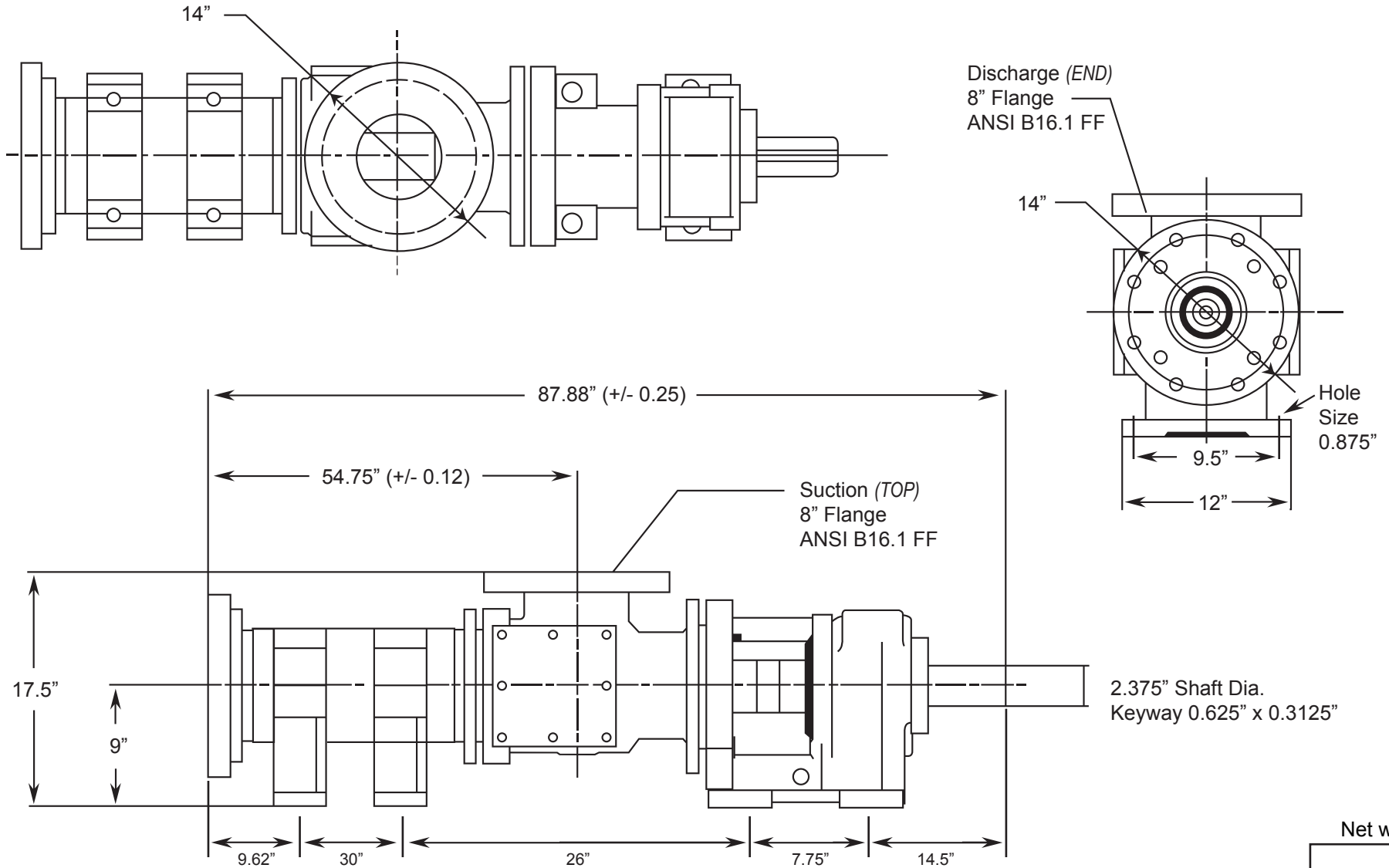
www.libertyprocess.com



MILLENNIUM SERIES - 2G090GIL

Progressive Cavity Pump

Dimensional Drawings



BACK TO TOP

(Pump Rotation is Counter Clockwise) ALL DIMN: Inches

Net weight

≈ lbs.

1225

2 Stage Pump

P: 847.640.7867 F: 847.640.7855
2525 Clearbrook Drive Arlington Heights, IL 60005

www.libertyprocess.com