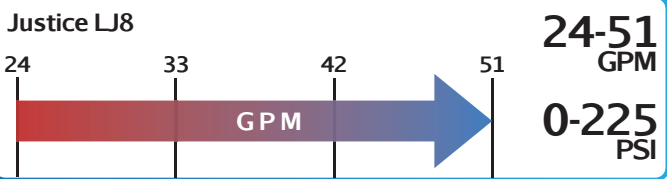
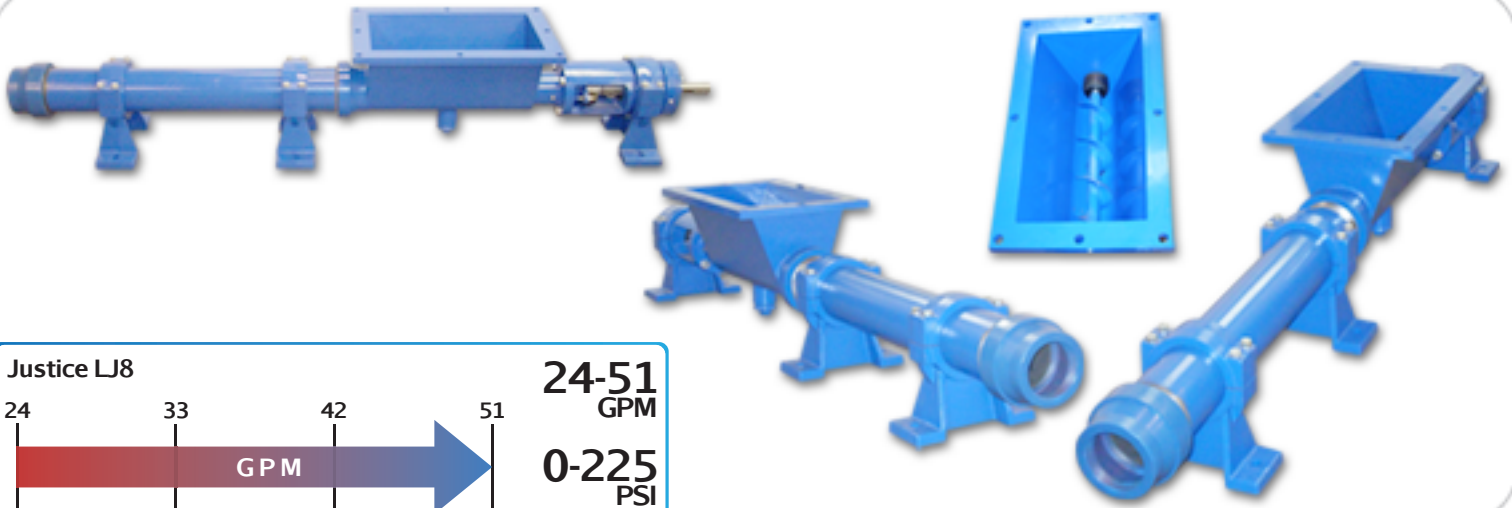




JUSTICE SERIES - LJ8

Progressive Cavity Hopper Pump



Features

- Large Hopper
- Welded Auger
- Hardened Joints
- Packing or Mechanical Seal
- 3-Stage Options
- Steel or Stainless Steel

Materials

- Rotor:** Tool or Stainless Steel - Chrome-Plated
- Stator:** Buna, Rubber, Viton™, EPDM
- Motor:** 3, 5, 7.5, and 10 hp
- Inlet:** 20" x 10"
- Outlet:** 4"
- Bases:** Steel and Stainless Steel

Curves

Click Links Below

1-Stage
1LJ8

2-Stage
2LJ8

3-Stage
3LJ8

Drawings

Click Links Below

1-Stage
1LJ8

2-Stage
2LJ8

3-Stage
3LJ8

Pump Description

The Liberty Justice Series Open Hopper Progressive Cavity Pump represents an ideal pumping solution for spent grain for the brewery industry with its ability to pump spent grain for transfer or wine must. Flow rates of 11.7 GPM per 100 Revolutions (24 GPM to 51 GPM) at 225 PSI are standard through the range of the series. The Justice Series offers a design of a heavy-duty auger mated to a rotor and stator for the most difficult pumping applications.

The large rectangular feed hopper design easily accommodates your pumping medium while the non-pulsating design of the product produces a low-shear flow that conveys your medium along effortlessly. Solids in suspension of up to 50% are accommodated by the Auger design.

The modular design of the Justice LJ8 Series Open Hopper Progressive Cavity pump is a hardened pinned-joint drive assembly with a body available in steel or 316 stainless steel and internal wetted components in either stainless steel or hardened tool steel with hard chrome plating for long-life and durability in abrasive pumping applications.

Rotors and Stators for the Justice LJ8 Series are available in 1, 2, and 3 stages for applications with 75, 150, and 225 PSI discharge pressures with stators available in Buna Nitrile, Viton, EPDM and Natural Rubber. The standard seal design is a set of packing with a lantern ring and flush connections. Mechanical Seal options are readily available.

The Liberty LJ8 Progressive Cavity Pump parts are direct aftermarket replacements that dimensionally interchange with the Moyno™ J8 Series, and the Tarby™ TJ8 Series.*

Contact a Liberty Process representative today for more information about the Justice Series.



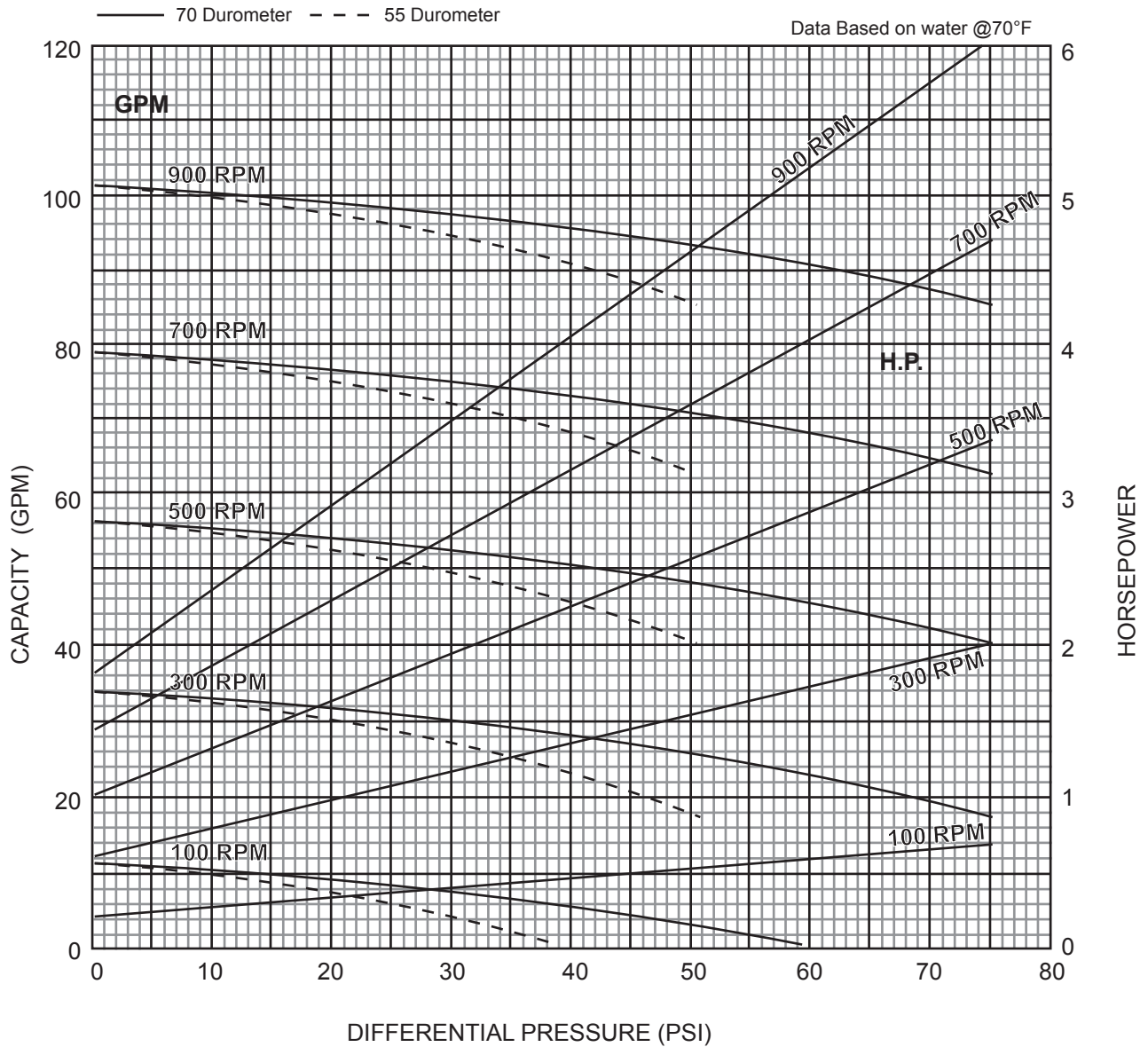


JUSTICE SERIES - 1LJ8

Progressive Cavity Pump

Performance Curves

RPM	100	300	500	700	900
NPSH REQ'D	.8	2.2	3.7	6.9	10.5
MIN. HP	1/2	1-1/2	2	3	5



1 Stage Pump

BACK TO TOP

P: 847.640.7867 F: 847.640.7855
2525 Clearbrook Drive Arlington Heights, IL 60005

www.libertyprocess.com

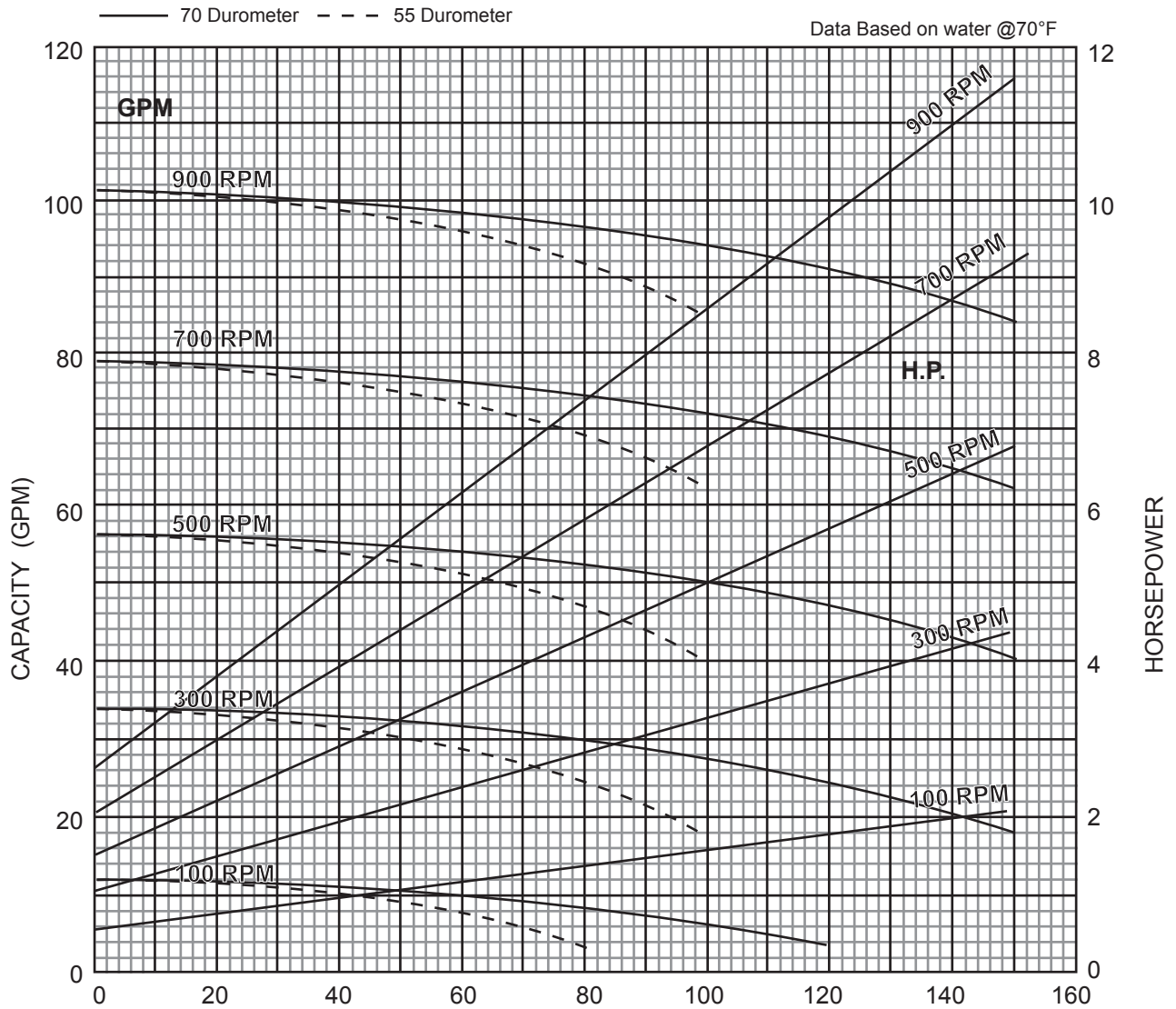


JUSTICE SERIES - 2LJ8

Progressive Cavity Pump

Performance Curves

RPM	100	300	500	700	900
NPSH REQ'D	.8	2.2	3.7	6.9	10.5
MIN. HP	1-1/2	3	5	7-1/2	7-1/2



2 Stage Pump

BACK TO TOP

P: 847.640.7867 F: 847.640.7855
2525 Clearbrook Drive Arlington Heights, IL 60005

www.libertyprocess.com

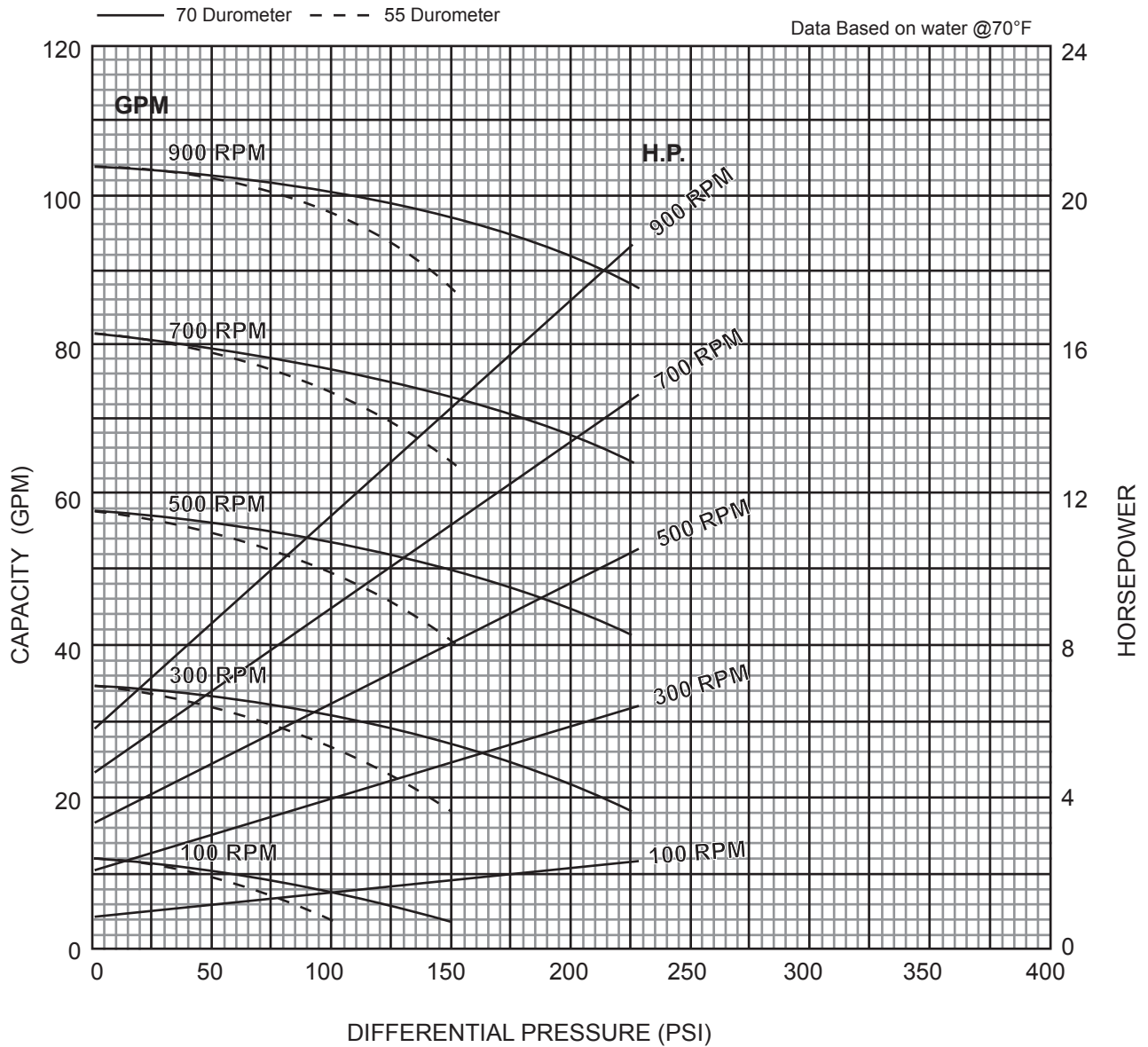


JUSTICE SERIES - 3LJ8

Progressive Cavity Pump

Performance Curves

RPM	100	300	500	700	900
NPSH REQ'D	.8	2.2	3.7	6.9	10.5
MIN. HP	2	5	7-1/2	10	10

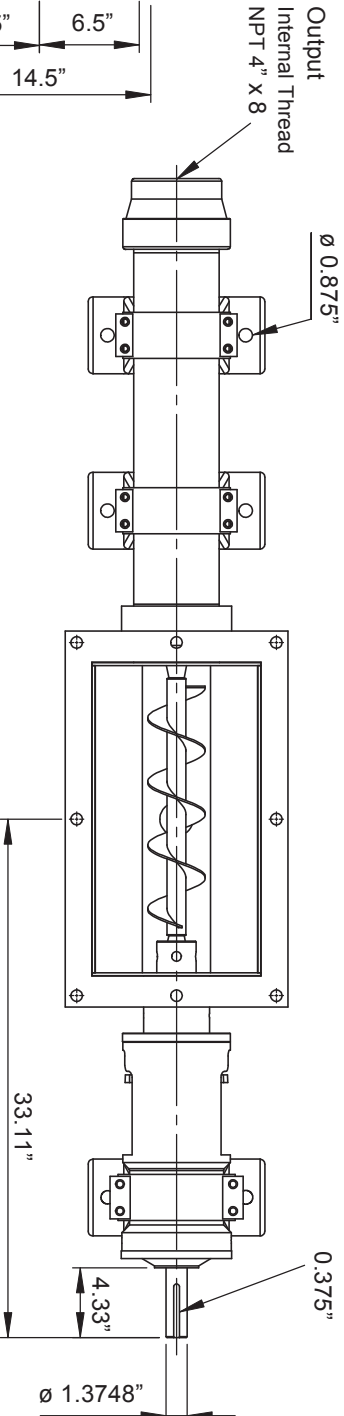
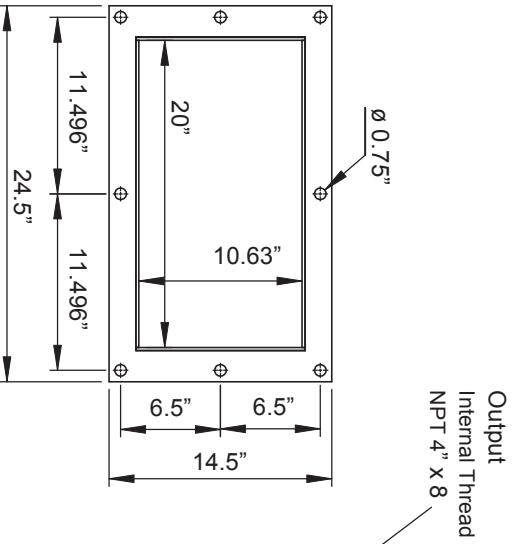
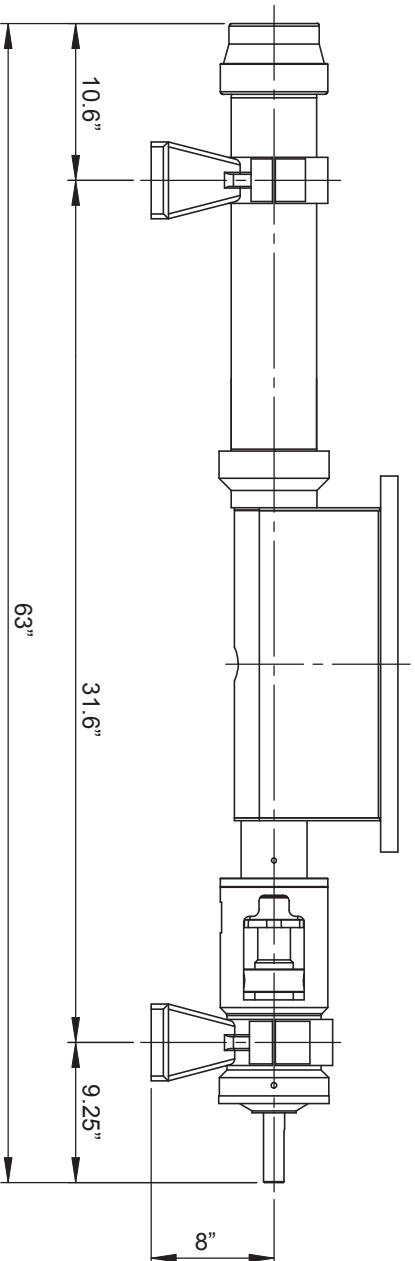
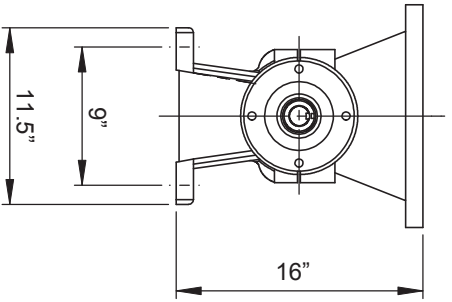


3 Stage Pump

BACK TO TOP

P: 847.640.7867 F: 847.640.7855
2525 Clearbrook Drive Arlington Heights, IL 60005

www.libertyprocess.com



BACK TO TOP

1 Stage Pump

ALL DIMN: Inches

Net weight

≈ lbs.

-

P: 847.640.7867 F: 847.640.7855

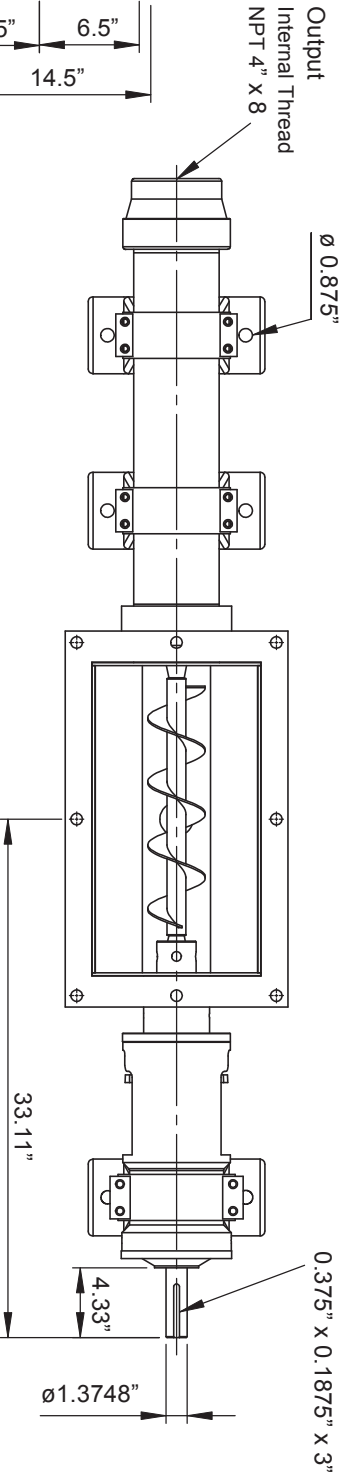
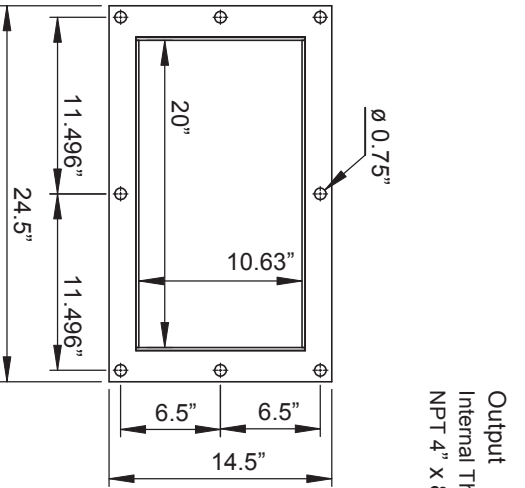
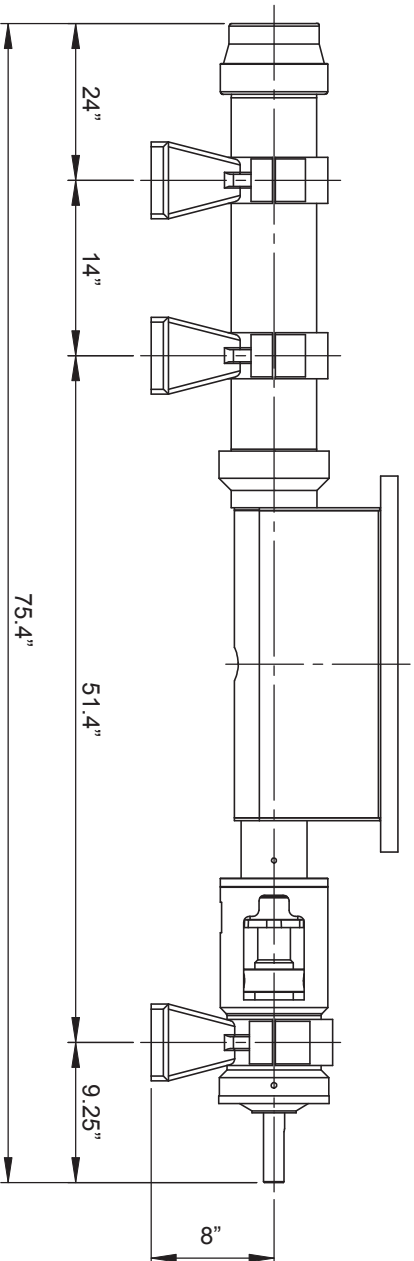
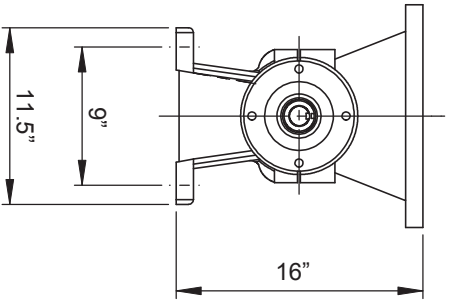
2525 Clearbrook Drive Arlington Heights, IL 60005

www.libertyprocess.com



JUSTICE SERIES - 2LJ8

Progressive Cavity Pump
Dimensional Drawings



BACK TO TOP

ALL DIMIN: Inches

Net weight

≈ lbs.

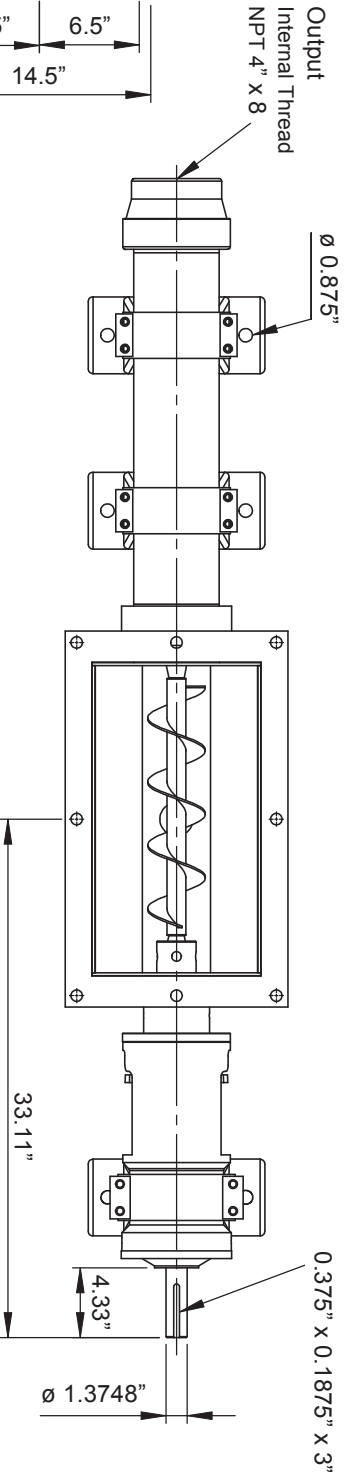
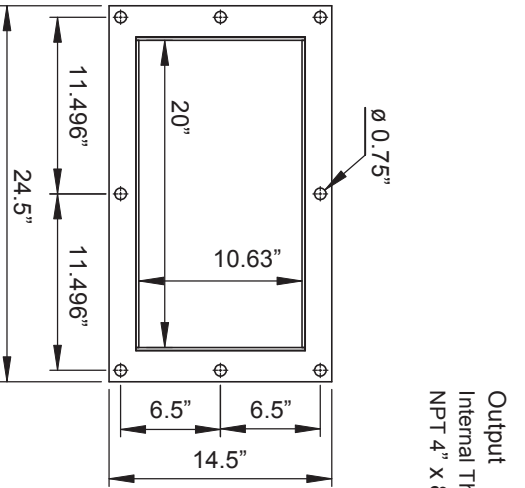
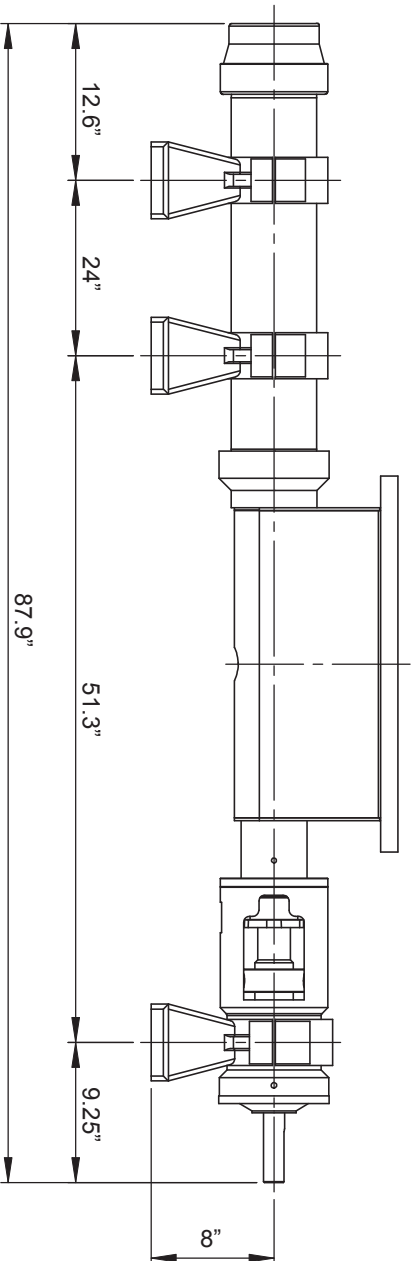
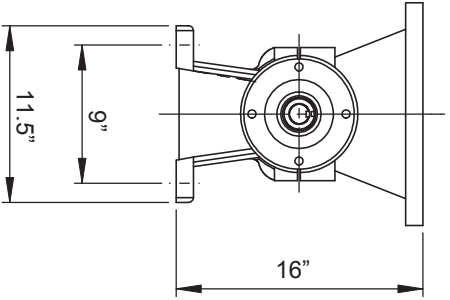
-

2 Stage Pump



JUSTICE SERIES - 3LJ8

Progressive Cavity Pump
Dimensional Drawings



BACK TO TOP

ALL DIMIN: Inches

Net weight

≈ lbs.

-

3 Stage Pump